

DRIVEWAY APPROACH QUANTITIES - THIS SHEET

C/L STATION	Approach, CI II, 6 inch (Syd)	Approach, CI II, 6 inch, Modified (Syd)	Culv End Sect, 12 inch (Ea)	Culv, CI F, 12 inch (Ft)	Culv, CI F, CSP, 12 inch (Ft)	Culv, CI F, Conc, 18 inch (Ft)	Culv, CI F, CSP, 18 inch (Ft)	Culv, Slp End Sect, 1 on 6, 18 inch, Longit (Ea)
25+77 L		34	2	32				
29+15 L			2		24			
30+06 L	46		2	32				
39+14 R		44	2		36			
39+63 R	37		2		36			
46+70 R		50					36	2
50+33 R		47				18	18	2
TOTAL	83	175	10	64	96	18	54	4

QUANTITIES - THIS SHEET

Quantity	Description
0.8 Acre	Clearing
1 Ea	Tree, Rem, 37 inch or Larger
12 Ea	Tree, Rem, 6 inch to 18 inch
2 Ea	Tree, Rem, Less than 6 inch
2 Ea	Culv, Rem, Less than 24 inch
10 Ea	Culv, End, Rem, Less than 24 inch
4 Hr	Horticultural Work

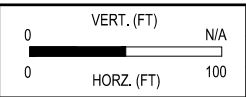
4/23/2021 4:42 PM Ollivia.Vanastet

FINAL PLAN REVISIONS

NO.	DATE	AUTH	DESCRIPTION



SAGINAW OFFICE
 230 S. Washington Ave.
 Saginaw, MI 48607
 Tel. 989-754-4717
 Fax. 989-754-4440
 www.SpicerGroup.com

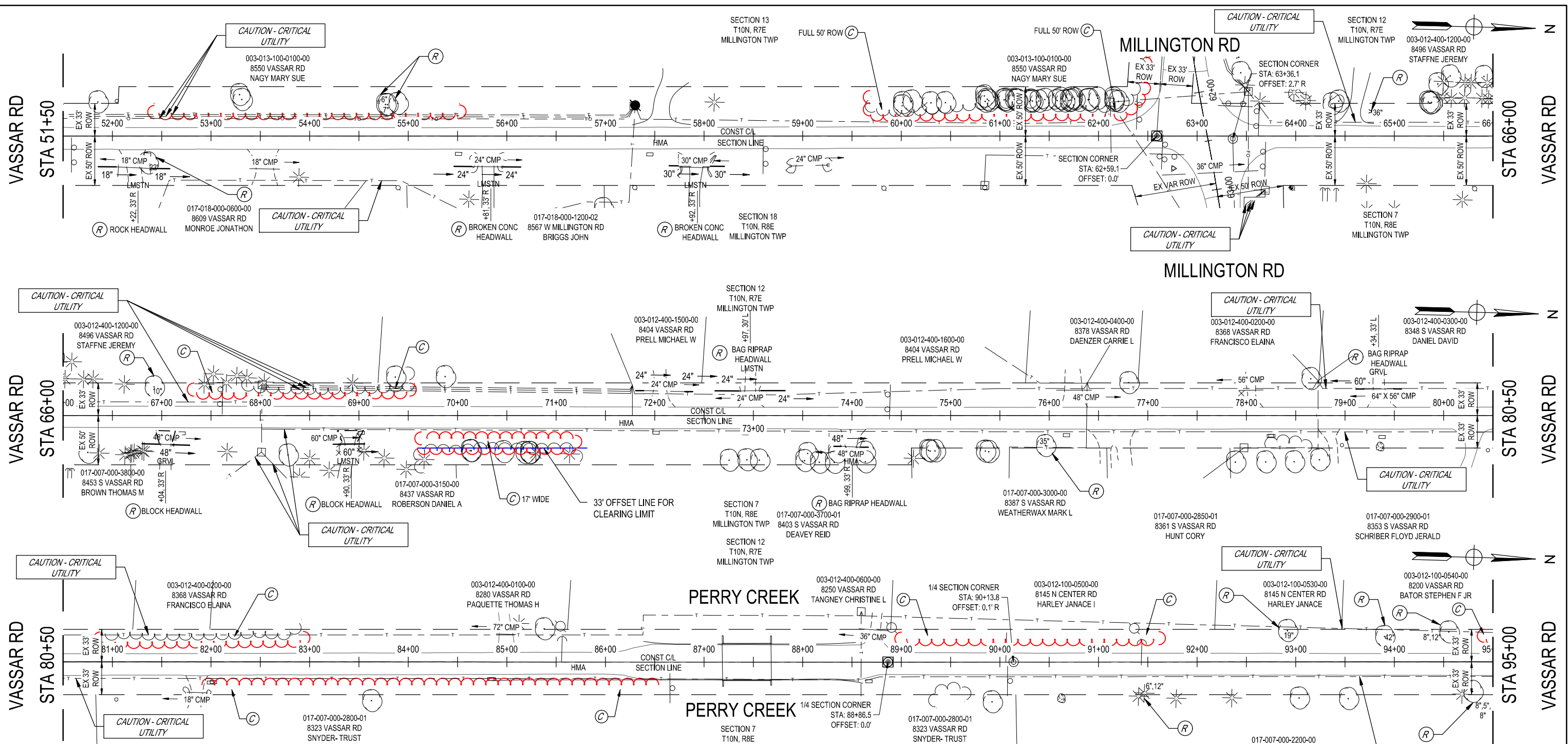


SGI PROJECT NO: 128551SG2020
 DATE: APRIL, 2021
 FILE: V_LP-PLAN.DWG

CS: 79051
 JN: 210364

CONSTRUCTION
VASSAR ROAD
STA 10+00 (POB) TO STA 51+50

DRAWING SHEET
 PLAN48 52



DRIVEWAY APPROACH QUANTITIES - THIS SHEET

C/L STATION	Approach, CI II, 6 inch (Syd)	Approach, CI II, 6 inch, Modified (Syd)	Culv, CI F, CSP, 18 inch (Ft)	Culv, CI F, CSP, 24 inch (Ft)	Culv, CI F, CSP, 30 inch (Ft)	Culv, CI F, 48 inch (Ft)	Culv, CI F, CSP, 48 inch (Ft)	Culv, CI F, 60 inch (Ft)	Culv, CI F, CSP, 60 inch (Ft)	Culv, Slp End Sect, 1 on 6, 18 inch, Longit (Ea)	Culv, Slp End Sect, 1 on 6, 24 inch, Longit (Ea)	Culv, Slp End Sect, 1 on 6, 30 inch, Longit (Ea)	Culv, Slp End Sect, 1 on 6, 48 inch, Longit (Ea)	Culv, Slp End Sect, 1 on 6, 60 inch, Longit (Ea)
52+22 R			36							2				
55+81 R				36							2			
57+92 R					36							2		
67+04 R	30					40							2	
68+90 R		35						40						2
72+10 L				16							2			
72+97 L				48							2			
73+99 R							16					2		
79+34 L									16					2
TOTAL	30	35	36	100	36	40	16	40	16	2	6	2	4	4

QUANTITIES - THIS SHEET

- 0.8 Acre Clearing
- 3 Ea Tree, Rem, 19 inch to 36 inch
- 1 Ea Tree, Rem, 37 inch or Larger
- 9 Ea Tree, Rem, 6 inch to 18 inch
- 1 Ea Stump, Rem, 19 inch to 36 inch
- 1 Ea Tree, Rem, Less than 6 inch
- 1 Ea Culv, Rem, 24 inch to 48 inch
- 1 Ea Culv, Rem, Over 48 inch
- 2 Ea Culv, End, Rem, Less than 24 inch
- 10 Ea Culv, End, Rem, 24 inch to 48 inch
- 2 Ea Culv, End, Rem, Over 48 inch

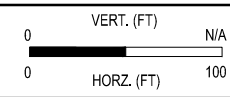
Addendum 1

6/30/2021 12:56 PM katherine.niemminger

FINAL PLAN REVISIONS			
NO.	DATE	AUTH	DESCRIPTION



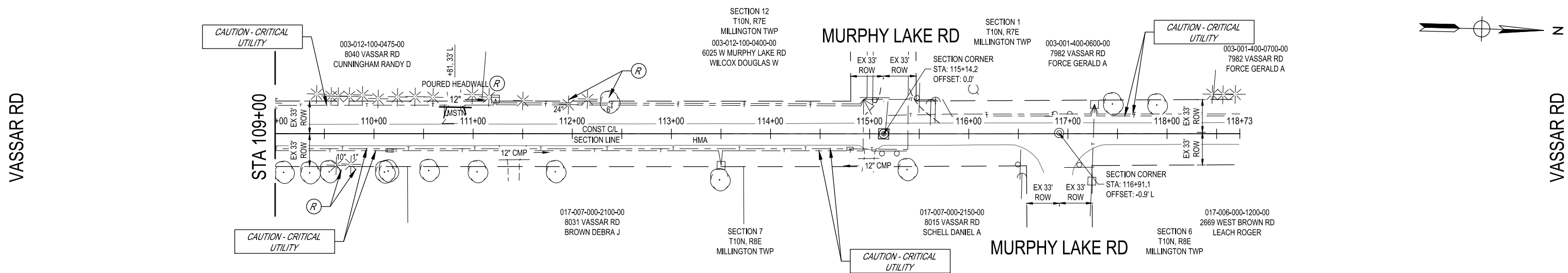
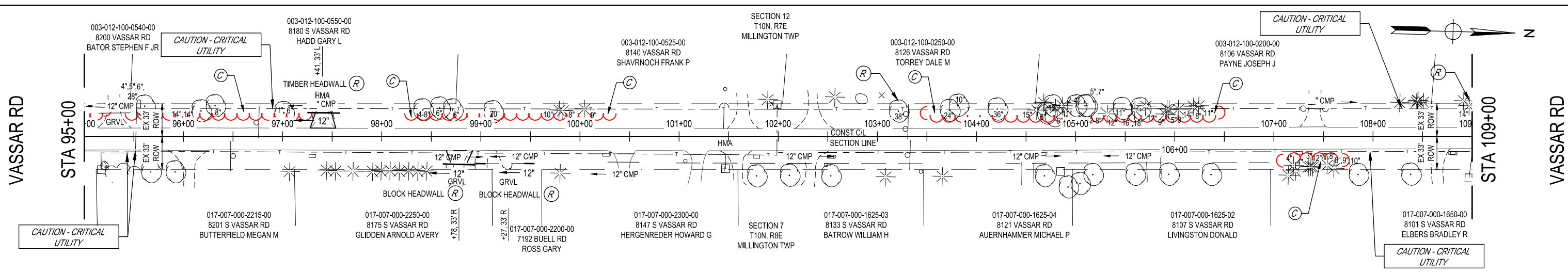
SAGINAW OFFICE
230 S. Washington Ave.
Saginaw, MI 48607
Tel. 989-754-4717
Fax. 989-754-4440
www.SpicerGroup.com



SGI PROJECT NO: 128551SG2020
DATE: JUNE, 2021
FILE: V_LP-PLAN.DWG

CS: 79051
JN: 210364

CONSTRUCTION		DRAWING	SHEET
VASSAR ROAD		PLAN49	53
STA 51+50 TO STA 95+00			



DRIVEWAY APPROACH QUANTITIES - THIS SHEET

C/L STATION	HMA Surface, Rem (Syd)	HMA Approach (Ton)	Approach, CI II, 6 inch (Syd)	Approach CI I, 6 inch, Modified (Syd)	Culv End Sect, 12 inch (Ea)	Culv, CI F, 12 inch (Ft)	Culv, CI F, CSP, 12 inch (Ft)
97+41 L	33	8		43	2	32	
98+78 R			39		2	32	
99+27 R					2		16
110+81 L			52		2	32	
TOTAL	33	8	91	43	8	96	16

QUANTITIES - THIS SHEET

0.4 Acre	Clearing
1 Ea	Tree, Rem, 19 inch to 36 inch
1 Ea	Tree, Rem, 37 inch or Larger
3 Ea	Tree, Rem, 6 inch to 18 inch
1 Ea	Tree, Rem, Less than 6 inch
3 Ea	Culv, Rem, Less than 24 inch
2 Ea	Culv, End, Rem, Less than 24 inch

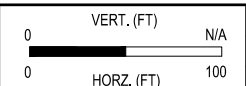
4/23/2021 4:42 PM O:\hina.Vanaki

FINAL PLAN REVISIONS

NO.	DATE	AUTH	DESCRIPTION



SAGINAW OFFICE
230 S. Washington Ave.
Saginaw, MI 48607
Tel. 989-754-4717
Fax. 989-754-4440
www.SpicerGroup.com



SGI PROJECT NO: 128551SG2020
DATE: APRIL, 2021
FILE: V_LP-PLAN.DWG

CS: 79051
JN: 210364

CONSTRUCTION
VASSAR ROAD
STA 95+00 TO STA 116+91 (POE)

DRAWING SHEET
PLAN50 54